

**vtech**<sup>®</sup>

User's Manual

# Crazy Legs Learning Bugs<sup>™</sup>



© 2005 VTech  
Printed in China  
91-02131-000 (美)

**Dear Parent:**

Ever notice the look on your baby's face when they learn something new through their own discovery? These self-accomplished moments are a parent's greatest reward. To help fulfill them, VTech® created the **Infant Learning**, series of toys.

These unique interactive learning toys directly respond to what children do naturally – play! Using innovative technology, these toys react to baby's interactions, making each play experience fun and unique as they learn age-appropriate concepts like first words, numbers, shapes, colors and music. More importantly, VTech®'s **Infant Learning** toys develop baby's mental and physical abilities by inspiring, engaging and teaching.

At VTech®, we know that a child has the ability to do great things. That's why all of our electronic learning products are uniquely designed to develop a child's mind and allow them to learn to the best of their ability. We thank you for trusting VTech® with the important job of helping your child learn and grow!

Sincerely,

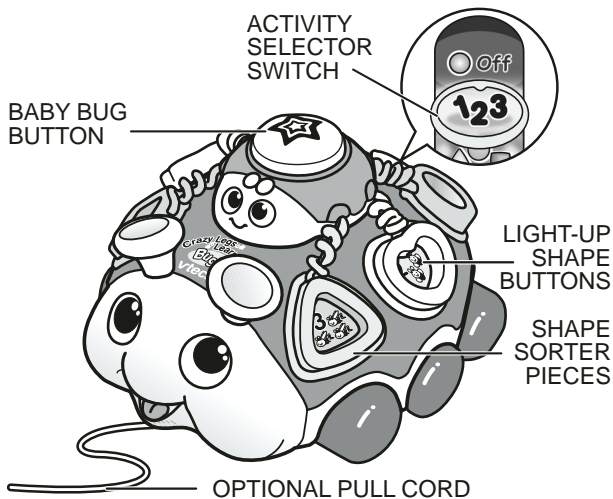
Your Friends at VTech®

To learn more about **Infant Learning**, and other VTech® toys, visit [www.vtech.com](http://www.vtech.com)

# INTRODUCTION

Thank you for purchasing the **VTech® Crazy Legs Learning Bugs™** learning toy.

The **VTech® Crazy Legs Learning Bugs™** is an interactive pull toy for toddlers 12 months and up. These silly bugs have crazy bendable legs for shape sorting fun. Learning colors, shapes, numbers, vocabulary and music has never been as much fun than with the adorable mommy and baby bugs. Quickly release the shape sorter pieces by pressing the baby bug and you'll be shape sorting again in no time. Rolling design promotes crawling and walking skills. Toddlers will also be rewarded with singing and music when the bugs are moved across the floor.



# INCLUDED IN THIS PACKAGE

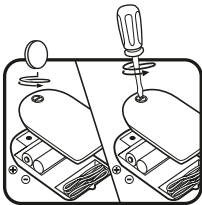
- One VTech® Crazy Legs Learning Bugs™ learning toy
- One instruction manual

**WARNING:** All packing materials, such as tape, plastic sheets, wire ties and tags are not part of this toy, and should be discarded for your child's safety.

## GETTING STARTED

### BATTERY INSTALLATION

1. Make sure the unit is turned **OFF**.
2. Locate the battery cover on the bottom of the unit. Use a coin or a screwdriver to loosen the screw.
3. Install 2 new 'AA' (UM-3/LR6) batteries following the diagram inside the battery box. (The use of new alkaline batteries is recommended for maximum performance.)
4. Replace the battery cover and tighten the screw to secure the battery cover.



### BATTERY NOTICE

- Install batteries correctly observing the polarity (+, -) signs to avoid leakage.
- Do not mix old and new batteries.
- Do not use batteries of different types.
- Remove batteries from the equipment when the unit will not be used for an extended period of time.
- Do not dispose of batteries in fire.
- Do not attempt to recharge ordinary batteries.

- The supply terminals are not to be short-circuited.
- Only batteries of the same and equivalent type as recommended are to be used.
- Do not mix alkaline, standard (carbon-zinc) or rechargeable (nickel-cadmium) batteries.

**WE DO NOT RECOMMEND THE USE OF RECHARGEABLE BATTERIES.**

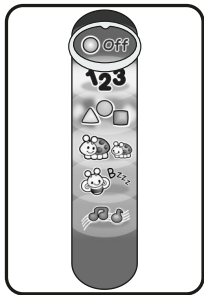
## PRODUCT FEATURES

### 1. ACTIVITY SELECTOR SWITCH

To turn the unit **ON**, slide **ACTIVITY SELECTOR SWITCH** to one of the five modes of play. To turn the unit **OFF**, slide the **ACTIVITY SELECTOR SWITCH** to the **OFF** position.

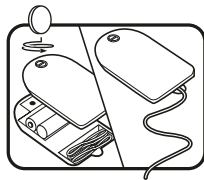
### 2. MODES OF PLAY

The five modes of play include **NUMBERS**, **SHAPES & COLORS**, **FOLLOW ME**, **INSECT IDENTIFICATION & SOUNDS** and **MUSIC**.



### 3. PULL CORD

To convert the unit from a push toy to a pull toy, remove the pull cord from the battery compartment and thread it through the eyelet on the bottom of the bug. For your child's safety, we suggest you store the pull cord in the compartment until your child is walking.

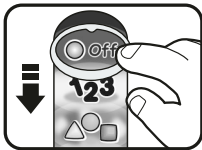


#### 4. AUTOMATIC SHUT-OFF

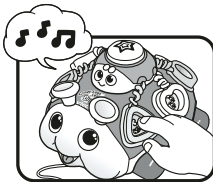
To preserve battery life, the **VTech® Crazy Legs Learning Bugs™** will automatically power-down after approximately 30 seconds without input. The unit can be turned on again by pressing any button, rolling the bugs or sliding the activity selector.

## ACTIVITIES

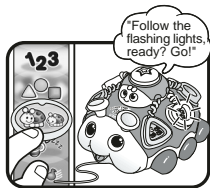
1. Slide the **activity selector switch** to turn the unit on and select a mode of play. You will hear a song followed by an introductory phrase when the unit is first turned on. You will also hear a phrase introducing the selected mode. The lights will flash with the sounds.



2. Insert the **shape sorter pieces** or press the **light-up shape buttons** to learn numbers, colors, shapes, insect names, sounds and melodies depending on the selected mode. In the music mode, insert a shape sorter piece or press a light-up shape button to activate a melody. Press the same shape again to hear the insect sound play over the melody. The lights will flash with the sound.

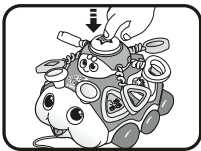


3. In follow me mode, you are encouraged to follow the light patterns. You will hear the phrase "Follow the flashing lights, ready? Go!" Then a light will flash. When the light has finished flashing, press the corresponding shape button. Each sequence contains no more than three steps.

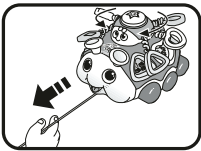


When the correct sequence has been repeated, you will hear a clapping sound. You will be given two chances to repeat the correct sequence. When an incorrect button has been pressed, you will hear "Oops, follow the flashing lights again!".

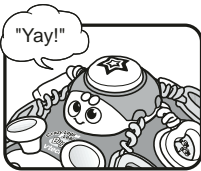
4. Press the **baby bug button** to release the shape sorter pieces. You will hear a phrase encouraging you to insert the shape sorter pieces again. The lights will flash with the sounds.



5. Roll the bugs to hear a song or random melodies. When a melody is playing you will also hear a variety of insect sounds randomly play throughout the melody. The lights will flash with the sounds.



6. After every six shapes are inserted, you will be rewarded with the baby bug cheering. The lights will flash with the sounds.



7. If there is no input to the unit after approximately ten seconds, you will hear a variety of phrases encouraging you to continue playing. After another ten seconds if there is still no input, you will hear "bye-bye" and the unit will automatically power-down.

## MELODY LIST

1. Row, Row, Row Your Boat
2. Old MacDonald Had a Farm
3. Sing a Song of Sixpence
4. If You're Happy and You Know It
5. Mulberry Bush
6. Yankee Doodle

## SUNG SONG LYRICS: (to the tune of Row, Row, Row Your Boat)

Sort, sort, sort my shapes.

Circles, hearts and squares.

My legs can bend, let's play again,

Shapes are everywhere!

## CARE & MAINTENANCE

1. Keep the unit clean by wiping it with a slightly damp cloth.
2. Keep the unit out of direct sunlight and away from any direct heat source.
3. Remove the batteries when the unit will not be in use for an extended period of time.
4. Do not drop the unit on hard surfaces and do not expose the unit to moisture or water.



# TROUBLESHOOTING

If for some reason the program/activity stops working or malfunctions, please follow these steps:

1. Please turn the unit **OFF**.
2. Interrupt the power supply by removing the batteries.
3. Let the unit stand for a few minutes, then replace the batteries.
4. Turn the unit **ON**. The unit will now be ready to play again.
5. If the product still does not work, replace with an entire set of new batteries.

If the problem persists, please call our Consumer Services Department at 1-800-521-2010 in the U.S. or 1-877-352-8697 in Canada, and a service representative will be happy to help you.

For information on this product warranty, please call **VTech**® at 1-800-521-2010 in the U.S. or 1-877-352-8697 in Canada.

## **IMPORTANT NOTE:**

Creating and developing **Infant Learning** products is accompanied by a responsibility that we at **VTech**® take very seriously. We make every effort to ensure the accuracy of the information, which forms the value of our products. However, errors sometimes can occur. It is important for you to know that we stand behind our products and encourage you to call our Consumer Services Department at 1-800-521-2010 in the U.S. or 1-877-352-8697 in Canada, with any problems and/or suggestions that you might have. A service representative will be happy to help you.

**Note:**

This equipment has been tested and found to comply with the limits for a Class B digital device, pursuant to Part 15 of the FCC Rules. These limits are designed to provide reasonable protection against harmful interference in a residential installation. This equipment generates, uses and can radiate radio frequency energy and, if not installed and used in accordance with the instructions, may cause harmful interference to radio communications. However, there is no guarantee that interference will not occur in a particular installation. If this equipment does cause harmful interference to radio or television reception, which can be determined by turning the equipment off and on, the user is encouraged to try to correct the interference by one or more of the following measures:

- Reorient or relocate the receiving antenna
- Increase the separation between the equipment and receiver
- Connect the equipment into an outlet on a circuit different from that to which the receiver is connected
- Consult the dealer or an experienced radio/TV technician for help

THIS DEVICE COMPLIES WITH PART 15 OF THE FCC RULES. OPERATION IS SUBJECT TO THE FOLLOWING TWO CONDITIONS: (1) THIS DEVICE MAY NOT CAUSE HARMFUL INTERFERENCE, AND (2) THIS DEVICE MUST ACCEPT ANY INTERFERENCE RECEIVED, INCLUDING INTERFERENCE THAT MAY CAUSE UNDESIRE OPERATION.

THIS CLASS B DIGITAL APPARATUS COMPLIES WITH CANADIAN ICES-003.

CET APPAREIL NUMÉRIQUE DE LA CLASSE B EST CONFORME À LA NORME NMB-003 DU CANADA.